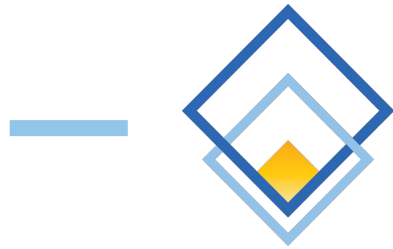

Grant Info Session



COMMUNITY
FOUNDATION

— OF THE MAHONING VALLEY —

Our grant opportunities

Operations Grants

General support

Applications open 2 months before the deadline

Program Grants

Specific activity/project



Emergency Grants

Up to \$5,000

Always Available

CFMV General Grant

- The widest range
- The smallest bucket
- Applications shared with fundholders & reviewed by staff/board
- Maximum \$10,000

Supporting organizations

Western Reserve Health Foundation

For health-focused projects in Mahoning County
Aligned with the Mahoning County Public Health CHIP
\$10,000 to \$20,000

Trumbull Memorial Health Foundation

For health-focused project in Trumbull County
Aligned with the Trumbull County Combined Health District CHIP
\$10,000 to \$20,000

William Swanston Charitable Fund

For projects focused on kids
Prioritizes Health & Wellness, Education, and Children's Services
\$10,000 to \$15,000

Once a year

Young Philanthropist Fund

April 15

One project chosen by the Mahoning Valley Young Professionals

International Institute Funds

April 15

Projects that support foreign-born people and cultural preservation

Steel Valley Homes for Youth Fund

July 15

Projects that help kids aging out of foster care

Ohio Living Lifelong Learning Fund

October 15

Projects that provide learning experiences for seniors in Mahoning County

Hospice Trust of Trumbull County

October 15

Projects that provide hospice services in Trumbull County

What we look for in grants

What

&

How

What you're doing

Alignment

Does your project match the funding source's priorities?

EX: Swanston's focus is to support youth and children, so does your work, project, or program support removing barriers for youth and children to thrive?

Narrative

Is it clear what you're trying to do?

Budget

Does the money coming in add up to the the money being spent?

How you're doing it

Collaboration

Are you working with others?

Deciding What to Do

Is the work something your community is asking for?

Is it backed up by other sources of data or information?

Strength of Your Organization

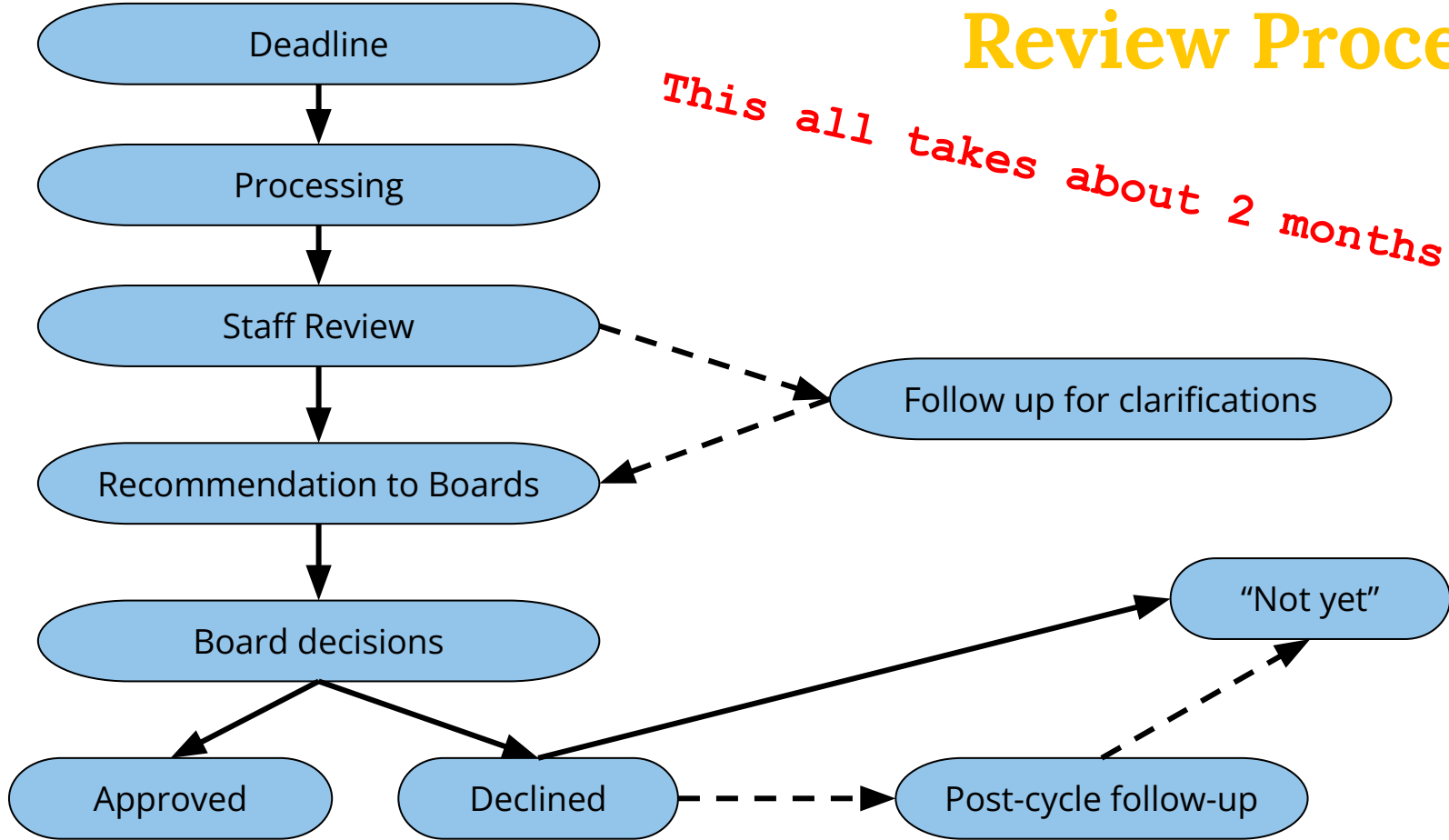
Does your organization have staff time, expertise, or other resources to do the work successfully?

Common missteps

- Application Titles
- Who are your other funding partners/who else is bought in?
- Applying with an open grant
- Grant report due dates
- Operating vs. Program grants

Review Process

This all takes about 2 months!



Following Up

In-cycle follow ups

- Small questions or clarifications

- Email or phone

Post-cycle follow ups

- Bigger questions and discussions

- In-person meeting

Questions?